

CITY OF KELOWNA

BYLAW NO. 10342

Road Closure and Removal of Highway Dedication Bylaw (Portion of Loseth Drive)

A bylaw pursuant to Section 40 of the Community Charter to authorize the City to permanently close and remove the highway dedication of a portion of highway on Loseth Drive

NOW THEREFORE, the Municipal Council of the City of Kelowna, in open meeting assembled, hereby enacts as follows:

1. That portion of highway attached as Schedule "A" comprising 40.0 m² shown in bold black as Closed Road on the Reference Plan prepared by H. G. van Gorp B.C.L.S. and completed on 20th day of April, 2010, is hereby stopped up and closed to traffic and the highway dedication removed.
2. The Mayor and City Clerk of the City of Kelowna are hereby authorized to execute such conveyances, titles, survey plans, forms and other documents on behalf of the said City as may be necessary for the purposes aforesaid and to affix the Corporate Seal of the said City thereto.

Read a first, second and third time by the Municipal Council this 7th day of June, 2010.

Approved Pursuant to Section 41(3) of the Community Charter this 10th day of June, 2010.

Linda Lochhead

(Approving Officer-Ministry of Transportation)

Adopted by the Municipal Council of the City of Kelowna this day of 2010.

Mayor

City Clerk

Schedule “A”

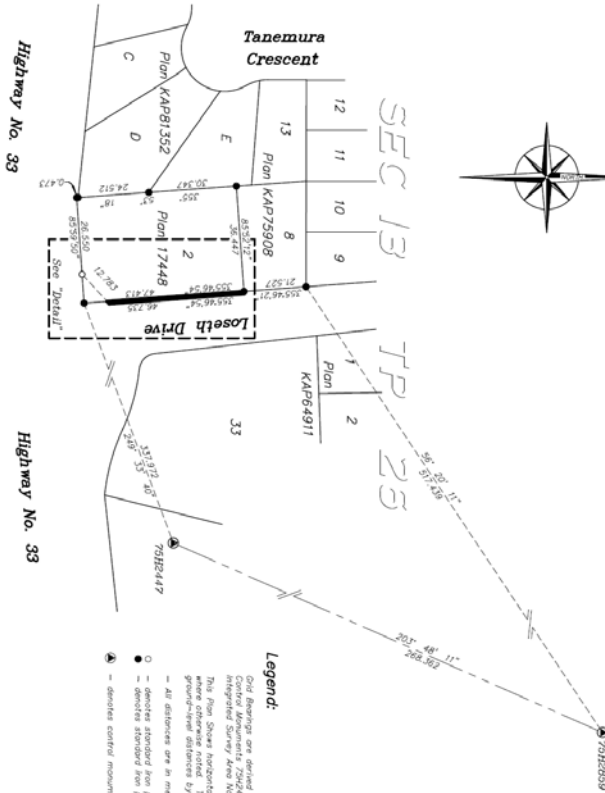
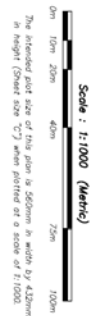
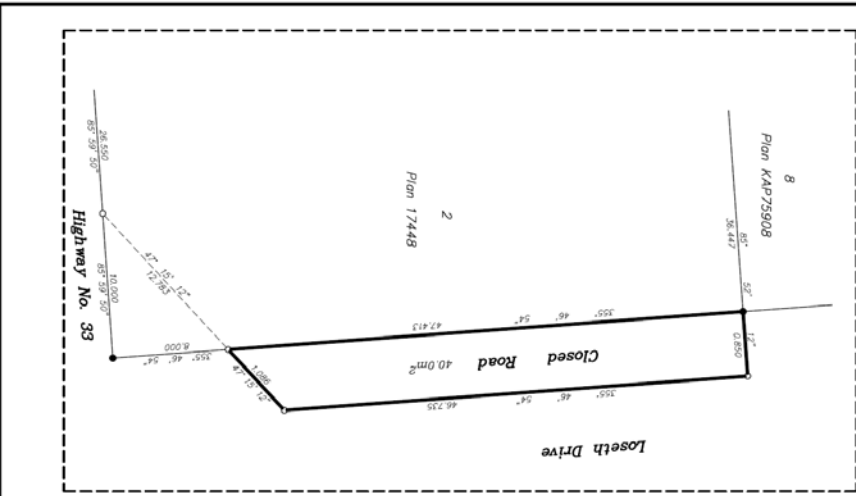
REFERENCE PLAN TO ACCOMPANY CITY OF KELOWNA ROAD
CLOSURE BY-LAW # BL10342, FOR CLOSURE AND REMOVAL OF
ROAD DEDICATED ON PLAN KAP64911, SEC 13, TP 26, ODYD

BCGS 82E/084

Plan EFP6969

Pursuant to Section 40 of the Community Charter,
and Section 120 of the Land Title Act.

“Detail”
Not to scale



Legend:

- - denotes monument from observations between Control Monuments 7926447 and 7942859.
- - denotes monument from Integrated Survey Area No. 4, City of Kelowna, MADA, (CSRS).
- - This Plan Shows horizontal ground-level distances, except ground-level distances by combined notice, 0.0998606.
- All distances are in metres and decimals thereof.
- - denotes monument from post placed
- - denotes monument from post placed
- - denotes monument from post placed
- - denotes control monument

This plan lies within the jurisdiction of the surveying officers of the City of Kelowna and the Ministry of Transportation and Infrastructure.

This plan lies within the Central Okanagan Regional District.
The field survey represented by this plan was completed by H.C. van Ooyen on the 20th day of April, 2010.
The checklist was filed under ECP#103428.

VAN OUYEN & COMPANY
Land Surveyors
201-442 E. 2nd Street
Kelowna, B.C. V1Y 9S1
P: 250-863-5171
F: 250-863-5172